

BEFORE & AFTER

The incredible transformation of this kitchen becomes more apparent when you see the “before pictures”, as this extraordinary makeover includes not only an obvious change of color and style, but also intricate remodeling to allow a more functional and open layout.

The remodeling process included eliminating the outside deck and windows in the eating area, and replacing them with high ceiling glass sliding doors, to allow the outdoor kitchen to become part of the inner space. The designers framed these new sliding doors with columns that mimic the recessed panel of the cabinetry. The same pattern was utilized in the fireplace mantel, featuring corbels that mimic the ones supporting the stone hood.

To house the new refrigerator, and avoid making it an overpowering focal point, the designers planned a large niche in the wall finished with an arch. The arch form was also utilized over the sink window, in the island bench, on top of the bookcase, and in the opening to the family room.

The closet near the old message center was eliminated and the wall angled to place the new bar, while the space behind is now a large walk-in-pantry accessible from the other side which is more convenient from the garage. A second closet was also eliminated and replaced with a bookcase and a new concealed message center, next to the fireplace.

The result is more than a funky colored kitchen. It is a total transformation that now also incorporates an outdoor kitchen, a bar, a seating area and family room.

BEFORE & AFTER Photos



BEFORE & AFTER Photos



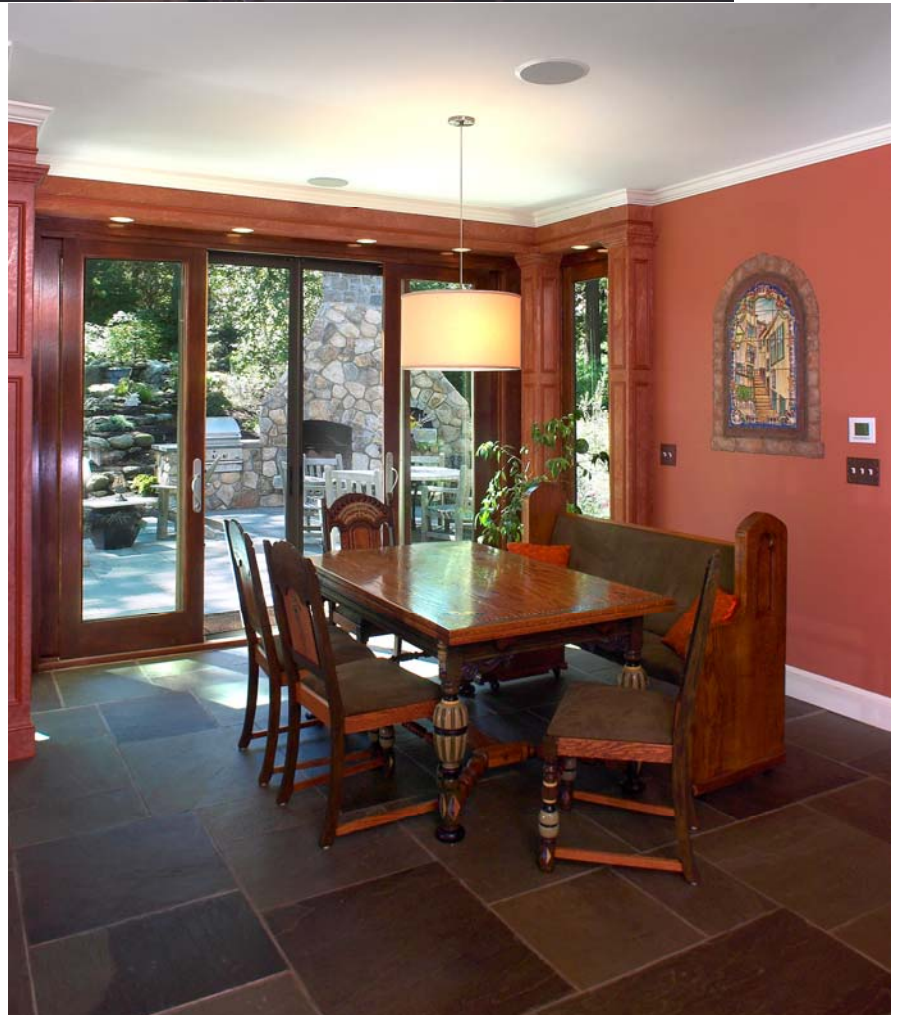
Integrated Subzero was recessed into a niche and finished with an arched top to mimic the arched valance over sink , the cut-out into the island and the arched opening into the living room.

BEFORE & AFTER Photos



The old windows were replaced by French doors flanked by columns finished in the same amber color than the cabinetry and opening into the outdoor kitchen. To enhance this effect and make the outdoor new living space part of the interior, the same blue slate flooring was used both inside and outside.

The purple tones used in this hand-painted table were the original inspiration for the color scheme of the new design.



BEFORE & AFTER Photos



BEFORE & AFTER Photos



The brick of the fireplace was concealed
fireplace and a new mantel designed
using corbels matching the ones support-
ing the stone hood.

